

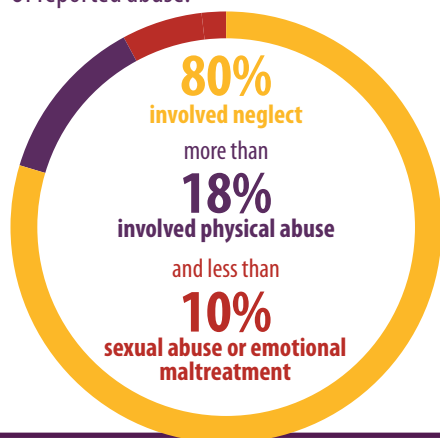
# CHILD ABUSE AND NEGLECT FACT SHEET

## FACTS & STATISTICS

Annual cost of child abuse and neglect in the United States is estimated as high as **\$80 billion a year**.  
PCA America (2012)

**More than 3.5 million** referrals for over **6 million children** on suspicions abuse or neglect are made in the United States each year.

Of reported abuse:



**Four children die each day** from abuse and neglect in this country. More than three-quarters of the children who die due to child abuse and neglect are **younger than 3 years old**.

Statistics compiled from: Child Maltreatment 2013 U.S. Department of Health and Human Services, Administration for Children and Families, Administration on Children, Youth and Families, Children's Bureau. (2015), Child Welfare Information Gateway Prevent Child Abuse America, [preventchildabuseamerica.org](http://preventchildabuseamerica.org) (2012) A Guide to Reporting Child Abuse & Neglect in Kansas, Department of Children and Families (2012)

## DEFINITIONS:

**Child Maltreatment:** The physical or mental injury, sexual abuse, negligent treatment or maltreatment of a child under the age of 18.

**Physical Abuse:** Child abuse which results in the infliction of physical harm on a child or the causation of a child's deterioration, and may include, but shall not be limited to, maltreatment or exploiting a child to the extent the child's health is endangered. May include bruises, burns, cuts, welts, fractures and internal injuries. Some studies have shown 80 percent of physical abuse stems from over-punishment.

**Sexual Abuse:** Any contact or interaction with a child in which the child is being used for the sexual stimulation of the perpetrator, the child or another person, including physical and non-physical acts. This includes allowing or permitting, or encouraging a child to engage in the sale of sexual relations or commercial sexual exploitation of a child or to be photographed, filmed or depicted in obscene or pornographic material.

**Emotional Abuse:** Infliction of mental or emotional harm to a child or the causation of a child's deterioration. Term may include any act, behavior or omission that impairs or endangers a child's social or intellectual functioning.

**Neglect:** An act of omission by a parent or caretaker, specifically the failure to provide for the child's basic needs and to provide proper care with respect to food, clothing, shelter, hygiene, medical attention, education and supervision.

**Commercial sexual exploitation of children:** An act of giving or offering to give, receiving or offering to receive anything of value to recruit or solicit any person younger than 18 to engage in a sexual act.

## CHILD ABUSE REPORTING HOTLINE:

KANSAS: 1.800.922.5330

MISSOURI: 1.800.392.3738

MISSOURI (calling from out of state): 573.751.3448



[info@sunflowerhouse.org](mailto:info@sunflowerhouse.org)



[www.sunflowerhouse.org](http://www.sunflowerhouse.org)



913.631.5800



@sunflower\_house



[facebook.com/SunflowerHouse](https://facebook.com/SunflowerHouse)